

Project of Solidarité Langtang:

1- Guidelines for the construction of houses.

2- Annexe earthquake resistance.

Langtang Reconstruction - working document - 16th of August 2015

Small house, 45 square metter, with kitchen inspired from traditional kitchen and bathroom inside 1 level based on the plan of the school in Kaski wich withstood the two big earthquakes. Stone masonry with horizontal beams (can be metal, RC or gabion) and light simple two slopes roof. (wood or metal)

PLAN ELEVATIONS AND SECTION plan 1/5

Solidarité Langtang
Association d'aide au Népal

Langtang Reconstruction - working document - 16th of August 2015

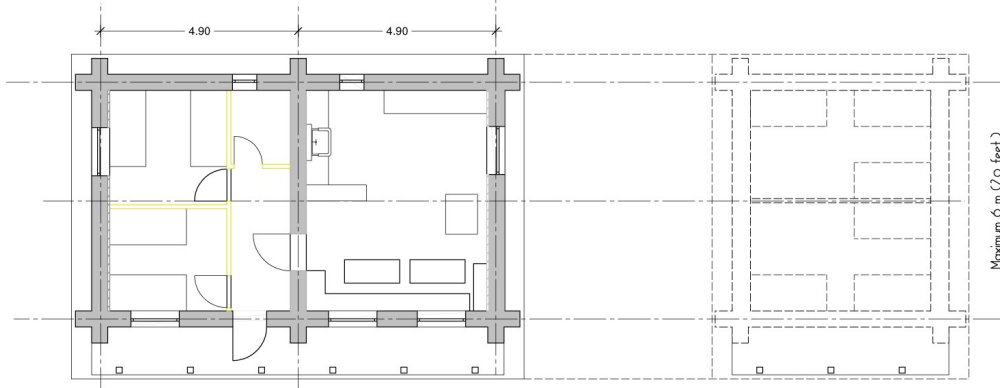
Variation on the first plan almost 50 m2 where the room is separated in two smaller rooms. Remember to not exceed 6 m for the length of the wall.

Possibility to build up to 3 modules together. The opening (doors and windows) should be think in according to the sun, the view, the neighbors and the dominant wind. The last module can have a separate enterings

PLAN VARIATIONS plan 2/5

Solidarité Langtang
Association d'aide au Népal

Langtang Reconstruction - working document - 16th of August 2015



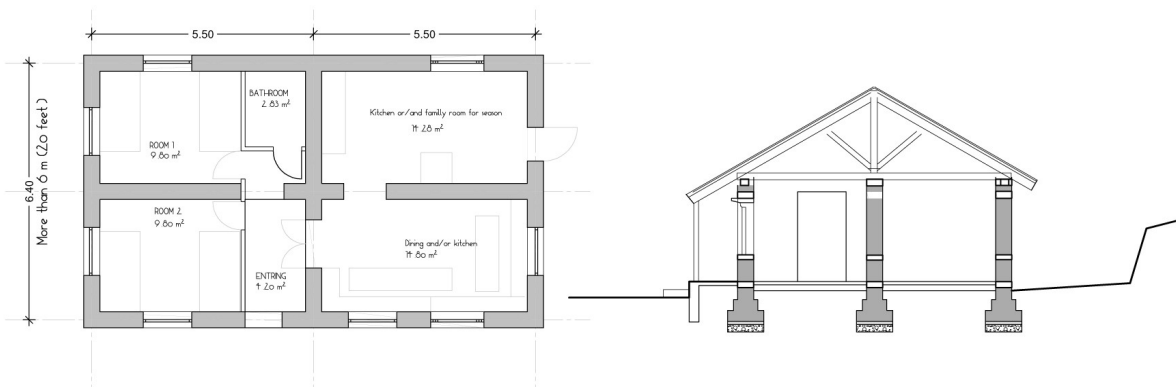
Possibility to build smaller module later and create a protected space in between which can be covers and closed

PLAN VARIATIONS

plan 3/5

Solidarité Langtang
Association d'aide au Népal

Langtang Reconstruction - working document - 16th of August 2015



Bigger model, the depth is more than 6 metter so there is a need of structural wall inside to make the house stronger.

PLAN VARIATIONS

plan 3/5

Solidarité Langtang
Association d'aide au Népal



This projection is made on the first plan, this is the smallest one, all the other plan are using the same kind of design.



plan 5/5

To follow the traditional style and use less ground since the ground is a problem in the national Park it will be very good to find a way to construct earthquake resistant house on two floors. We don't have enough time to find the solutions and to make a fixed plan of this house, but this could be also an appropriate solution to rebuild, the questions are how to make it earthquake resistant and how to make it not too expensive.

Solidarité Langtang
Association d'aide au Népal

Namaste!

This design is done by Solidarité Langtang and it will be another options. Thank you Solidarité Langtang team for your big effort of making this design. We Langtangpa highly appreciate your afford.

Temba Lama- Chairmain of [Langtang Management and Reconstruction Committee](#)