

Proyecto de Solidarité Langtang:

- 1- Guía para la construcción de las casas.
- 2- Anexo seguridad ante posibles terremotos.

Langtang Reconstruction - working document - 16th of August 2015

PLAN ELEVATIONS AND SECTION

plan 1/5

Small house, 45 square metter, with kitchen inspired from traditional kitchen and bathroom inside 1 level based on the plan of the school in Kaski wich withstood the two big earthquakes. Stone masonry with horizontal beams (can be metal, RC or gabiron) and light simple two slopes roof. (wood or metal)

Solidarité Langtang
Association d'aide au Népal

Langtang Reconstruction - working document - 16th of August 2015

PLAN VARIATIONS

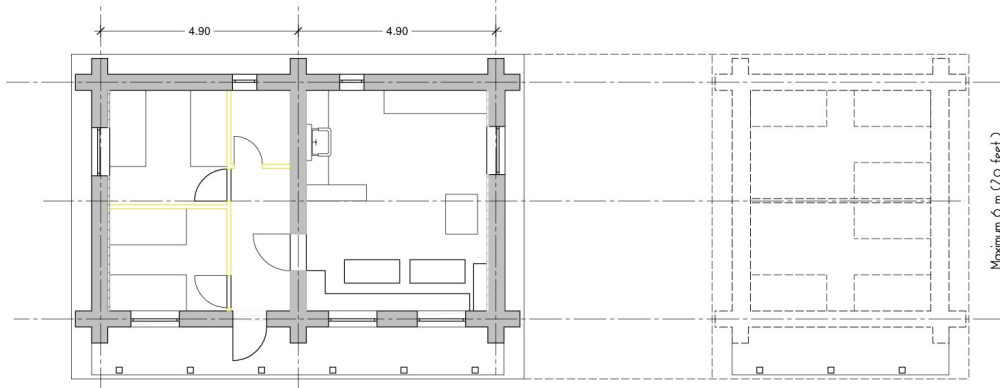
plan 2/5

Variation on the first plan almost 50 m2 where the room is separated in two smaller rooms Remember to not exceed 6 m for the length of the wall.

Possibility to build up to 3 modules Together. The opening (doors and windows) should be think in according to the sun, the view, the neighbors and the dominant wind. The last module can have a separate enterings

Solidarité Langtang
Association d'aide au Népal

Langtang Reconstruction - working document - 16th of August 2015



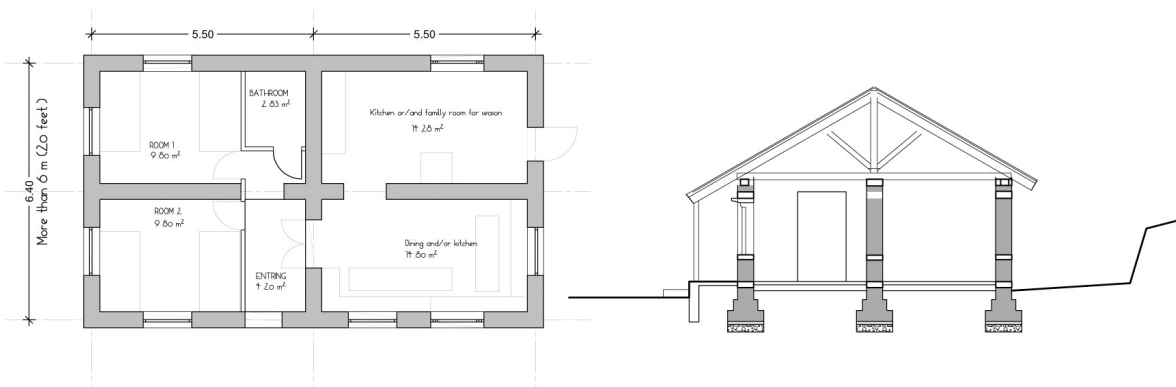
Possibility to build smaller module later and create a protected space in between which can be covers and closed

PLAN VARIATIONS

plan 3/5

Solidarité Langtang
Association d'aide au Népal

Langtang Reconstruction - working document - 16th of August 2015



Bigger model, the depth is more than 6 metter so there is a need of structural wall inside to make the house stronger.

PLAN VARIATIONS

plan 3/5

Solidarité Langtang
Association d'aide au Népal



This projection is made on the first plan, this is the smallest one, all the other plan are using the same kind of design.



plan 5/5

To follow the traditional style and use less ground since the ground is a problem in the national Park it will be very good to find a way to construct earthquake resistant house on two floors. We don't have enough time to find the solutions and to make a fixed plan of this house, but this could be also an appropriate solution to rebuild, the questions are how to make it earthquake resistant and how to make it not too expensive.

Solidarité Langtang
Association d'aide au Népal

Namaste!

Estos diseños están hechos por Solidarité Langtang y serán otras opciones a tener en cuenta.

Gracias equipo de Solidarité Langtang por su gran esfuerzo al trabajar en este diseño. Nosotros, los aldeanos de Langtang, valoramos éste esfuerzo.

Temba Lama- Presidente de [Langtang Management and Reconstruction Committee](#)